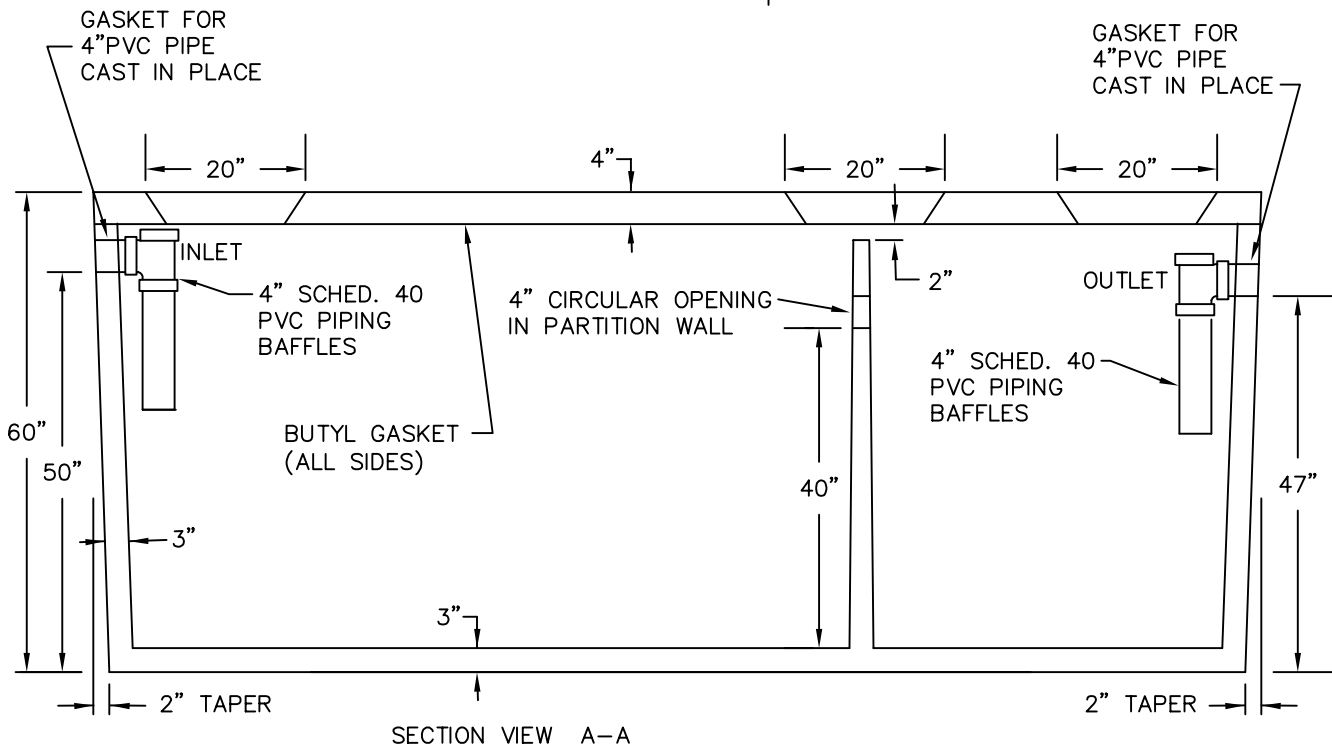
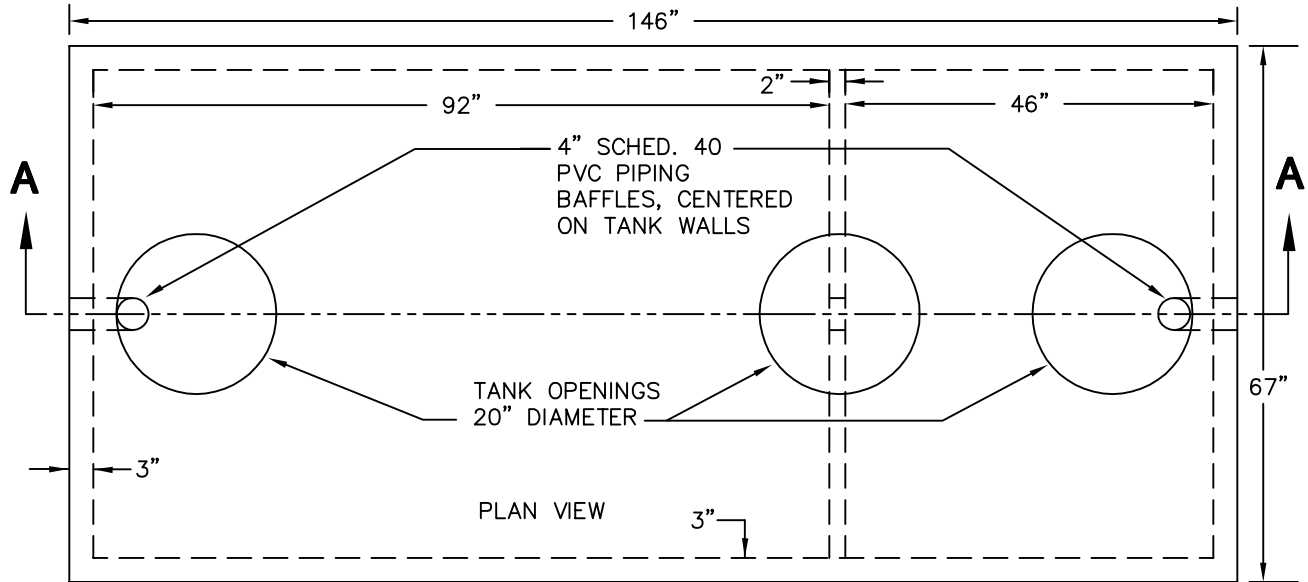


# SEPTIC TANK - TWO COMPARTMENTS 1500 GALLON - ONE PIECE



SPECIFICATIONS / STEWART CONCRETE STANDARDS  
 5000 PSI MINIMUM AT 28 DAYS  
 DESIGN MAXIMUM EARTH COVER IS 3.0'; NO TRAFFIC LOADS  
 1 1/4" x 3/4" BUTYL GASKET PROVIDED FOR JOINT



STEWART CONCRETE PRODUCTS  
 2179 HIGHWAY 32  
 HALFWAY, MISSOURI 65663  
 (800) 798-0183 FAX (417) 445-2421

[www.stewartconcrete.net](http://www.stewartconcrete.net)