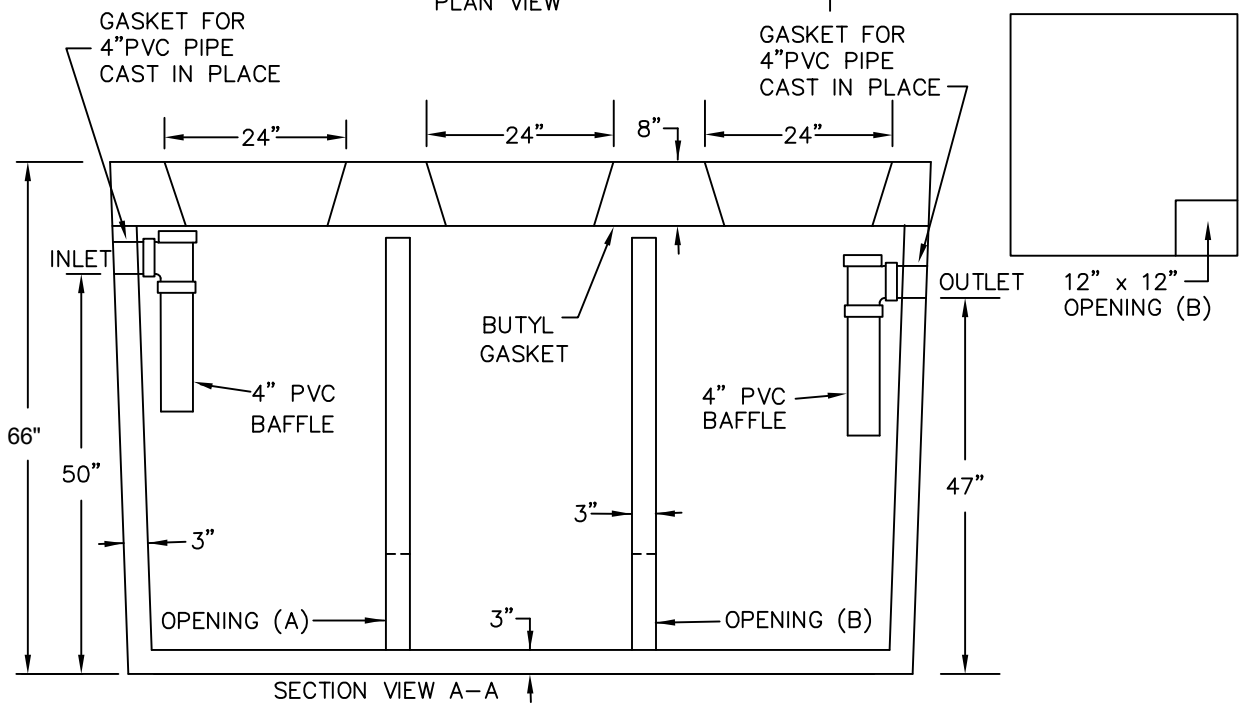
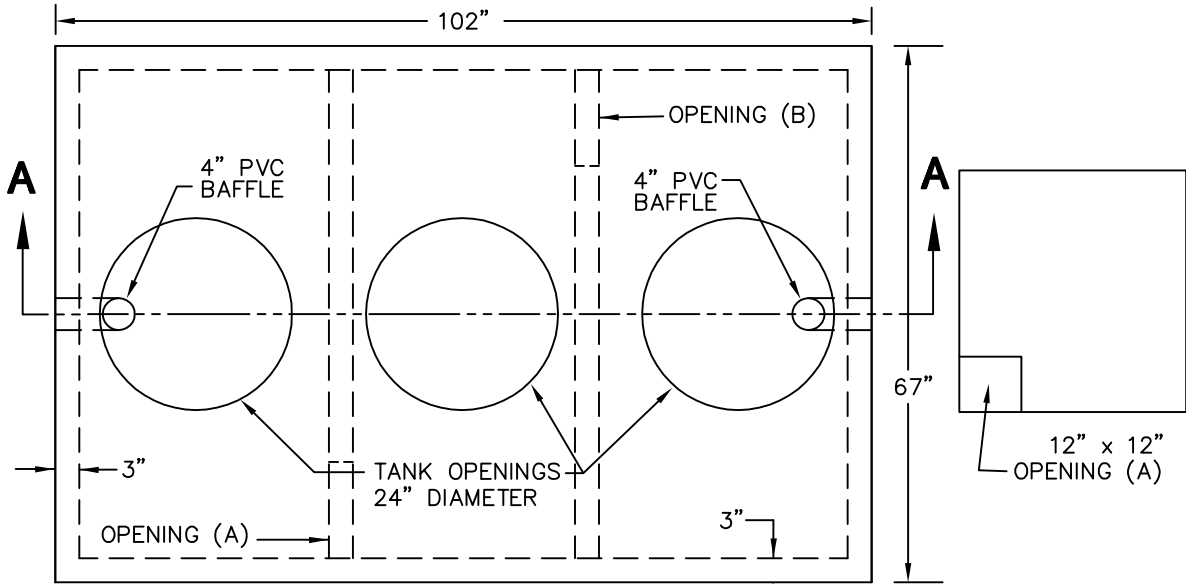


THREE COMPARTMENT GREASE TRAP, 1000 GALLON - ONE PIECE - TRAFFIC LOADS



SPECIFICATIONS / STEWART CONCRETE STANDARDS
 5000 PSI MINIMUM AT 28 DAYS
 DESIGN MAXIMUM EARTH COVER IS 3.0'; TRAFFIC LOADS
 BUTYL GASKET PROVIDED FOR JOINT



STEWART CONCRETE PRODUCTS
 700 E. WARE
 WEBB CITY, MISSOURI 64870
 (888) 673-3321 FAX (417) 673-3172

www.stewartconcrete.net