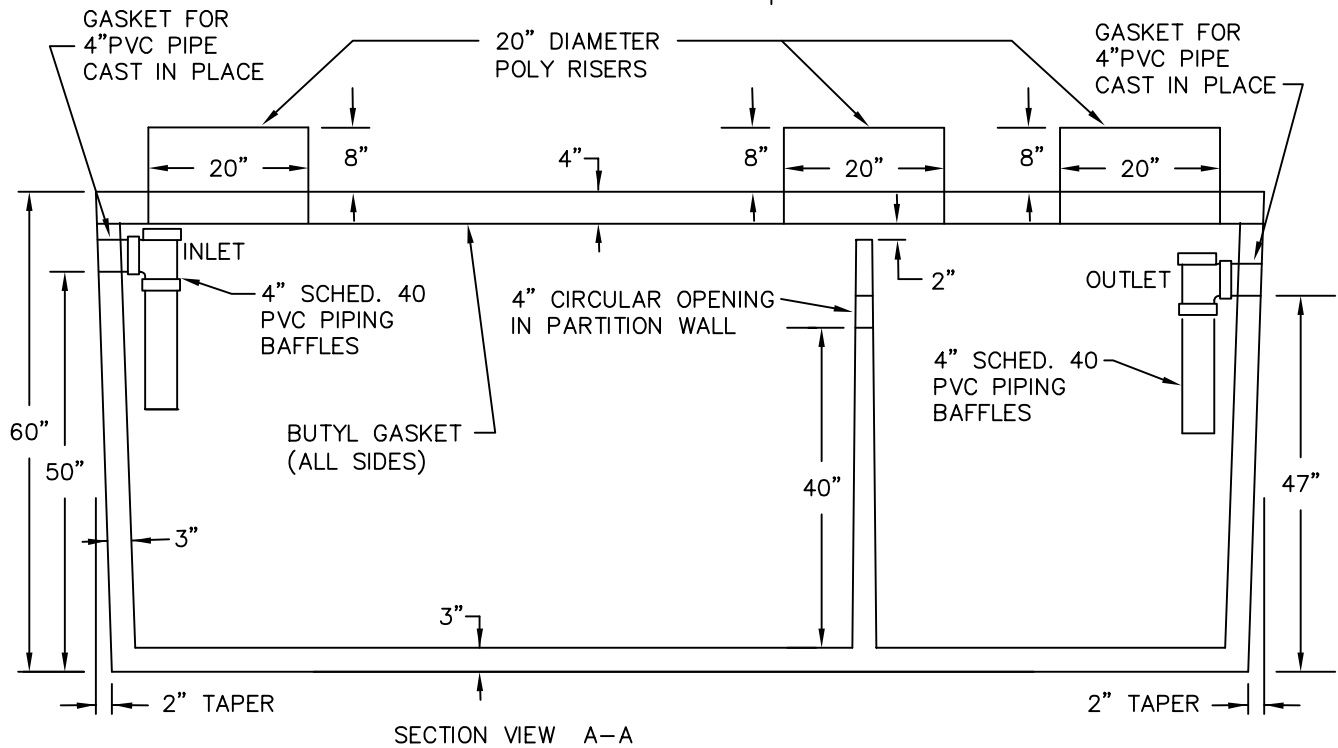
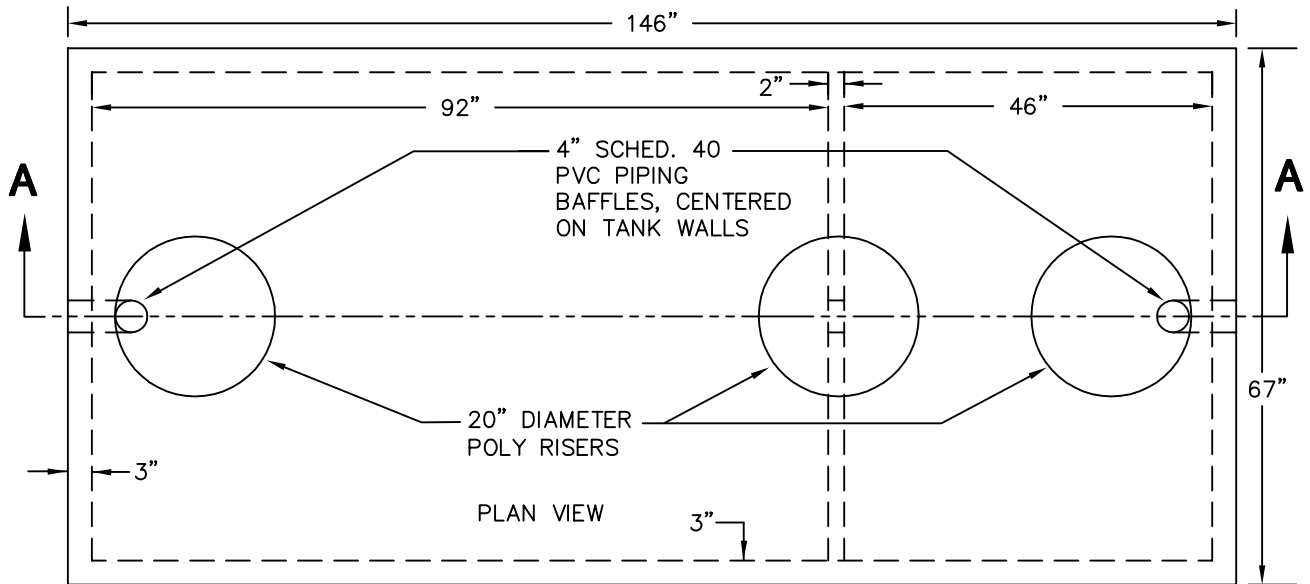


SEPTIC TANK - TWO COMPARTMENTS

1500 GALLON - ONE PIECE WITH RISERS



SPECIFICATIONS / STEWART CONCRETE STANDARDS
 5000 PSI MINIMUM AT 28 DAYS
 DESIGN MAXIMUM EARTH COVER IS 3.0'; NO TRAFFIC LOADS
 1 1/4" x 3/4" BUTYL GASKET PROVIDED FOR JOINT



STEWART CONCRETE PRODUCTS
 2179 HIGHWAY 32
 HALFWAY, MISSOURI 65663
 (800) 798-0183 FAX (417) 445-2421

www.stewartconcrete.net