

# DROP INLET BOX

**ASTM C33, 150**

SPECIFICATIONS / STEWART CONCRETE STANDARDS

4500 PSI MINIMUM AT 28 DAYS

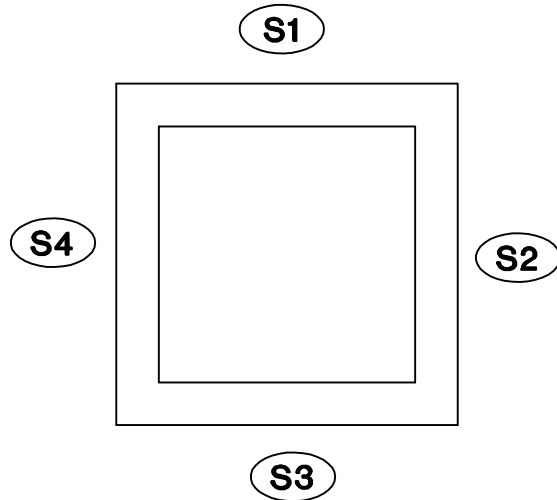
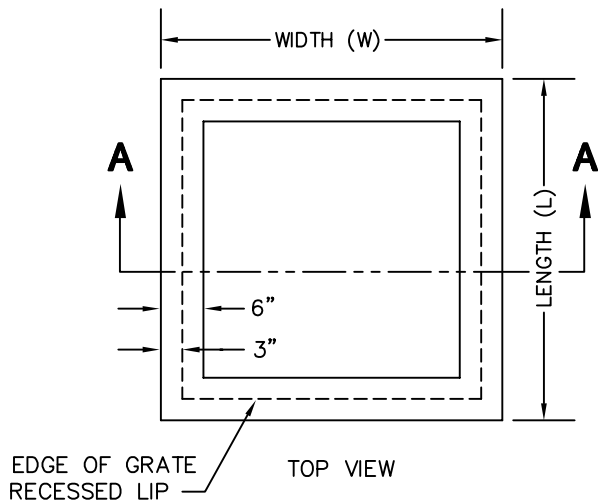
#4 BARS AT 12" O.C. E.W.

6 INCH LID WITH FRAME / GRATE CAST IN



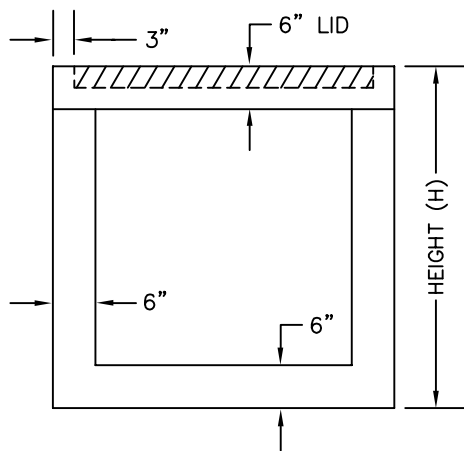
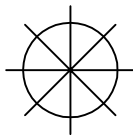
**STEWART  
CONCRETE  
PRODUCTS**

Job \_\_\_\_\_ Box \_\_\_\_\_



DESIGN DIMENSIONS
LENGTH
WIDTH
HEIGHT
FRAME / GRATE

DIRECTION FROM NORTH



S1
IN
OUT
NONE
SIZE
ELEV.
TYPE OF OPENING

S2
IN
OUT
NONE
SIZE
ELEV.
TYPE OF OPENING

S3
IN
OUT
NONE
SIZE
ELEV.
TYPE OF OPENING

S4
IN
OUT
NONE
SIZE
ELEV.
TYPE OF OPENING

STEWART CONCRETE PRODUCTS  
700 E. WARE  
WEBB CITY, MISSOURI 64870  
(888) 673-3321 FAX (417) 673-3172

[www.stewartconcrete.net](http://www.stewartconcrete.net)